



The IUCN WCPA (Mountains Biome) Mountain Connectivity Conservation Management Workshop – Papallacta, Ecuador, November 14-17 2006

Quick facts:

- The workshop is to be held from November 14-17 2006 at Termas de Papallacta, 65 kilometres east of Quito, Ecuador.
- A workshop launch will be held involving the media at the IUCN SUR offices on the morning of Tuesday November 14.
- The workshop has been organised by the Mountain Biome Theme of the IUCN WCPA - a global network of more than 500 mountain experts.
- A practical book on 'how to manage large scale connectivity conservation' will be one of the main outcomes of the workshop.
- The workshop will bring together over 50 experts in mountain conservation and protected areas from around the world including, from a number of countries in South America, to share an intensive networking and editorial effort during the four days of the workshop.

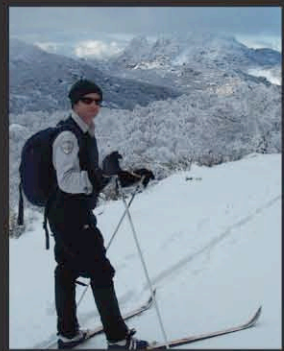
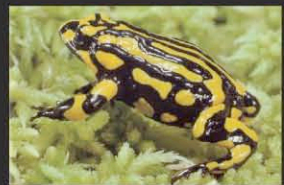
Who is organizing the workshop?

This workshop, to be held from November 14-17 2006, has been organised by the Mountains Biome Theme of the World Commission on Protected Areas (WCPA), one of six Commissions of IUCN - The World Conservation Union. The World Conservation Union is the world's largest and most important conservation network.

A media launch for the workshop will be held at the IUCN Regional Sur office in Quito - Av. Los Shyris 2680 y Gaspar de Villaroel Edificio Mita Cobadelsa PH, on the morning of Tuesday November 14.

The Mountain Biome Theme is a global network of mountain experts devoted to preserving and protecting our precious mountain regions of the world. It is led by a team of experts to work on a wide range of mountain protection issues.

The workshop is proudly supported by



The Mountain Biome Theme was established by The World Conservation Union in 1992 with the goals of:

- Having IUCN play a strong role in the Mountain Agenda follow up on Chapter 13 of Agenda 21 from the Rio Earth Summit.
- Developing a support and exchange network of protected area managers, researchers and other professionals dealing with mountain protected areas who share common issues.
- Promoting a greater awareness of values of mountain protected areas (MtPAs) among the international community of governments, environmental NGOs, donors and the general public.

What is the workshop about?

As part of the work of the IUCN World Commission on Protected Areas (Mountains Biome), the workshop has been in planning for two years, starting with a workshop on Mountain Connectivity Conservation Management in Banff, Canada.

The IUCN WCPA's 2005-2008 Strategic Plan focuses on large scale connectivity conservation in mountain areas. The workshop on Mountain Connectivity Conservation Management will generate a practical book on 'how to manage large scale connectivity conservation'. The book will assist managers, and is planned to be used for capacity building for connectivity conservation management.

Workshop Structure

The workshop will bring together over

50 experts in mountain conservation and protected areas, including from a number of countries in South America such as Ecuador, Chile, Argentina, Colombia and Bolivia. There will be an intensive networking and editorial effort during the workshop, including workshop activities, discussions and demonstrations and field excursions to mountain protected areas of the equatorial Andes.

Each participant has contributed a chapter or a case study to the book, whose introductory chapter, general methodology, terminology, synthesis and next steps will be developed as a result of the discussions at the workshop.

Workshop venue

Quito is one of the most picturesque capital cities of the Andean world. Surrounded by tall mountains covered with high Andean forests encroached with Páramo grasslands, the eastern cordillera offers pertinent examples of conservation connectivity and priorities for management of protected areas.

East of Quito, nestled in a hanging valley towards the Amazon verdant, and close to the snow pack volcano Antisana, is the colonial-aged town of Papallacta. It is ideally located for the workshop field trips to the Páramo of Guamani and Oyacachi, Antisana and Cayambe-Coca Ecological Reserves, the Quijos river valley, San Rafael waterfall and Tayos' cave.

Contact:
Graeme Worboys
IUCN WCPA Vice Chair Mountains Biome
Email: g.worboys@bigpond.com

More information:
www.mountains-wcpa.org